

Eastmoor Park

Harpenden, AL5 1BN

CASH BUYERS ONLY. Two bedroom end of terrace house circa 794 sq ft with enormous potential to extend (STPP). Includes a garage en bloc. Ideally located within walking distance of the amenities of Southdown and Harpenden town centre and station. ****CHAIN FREE****

Guide price £300,000

Eastmoor Park

Harpenden, AL5 1BN



- CASH BUYERS ONLY
- Walking distance to town centre
- Enormous potential to extend (STPP)
- **CHAIN FREE**
- Two Bedrooms, one bathroom and includes garage en bloc
- Council Tax Band D

Entrance Hall

Kitchen

10'3" x 7'8" (3.14m x 2.36m)

Lounge/Dining Room

21'8" x 11'1" (6.62m x 3.40m)

Cloak Room

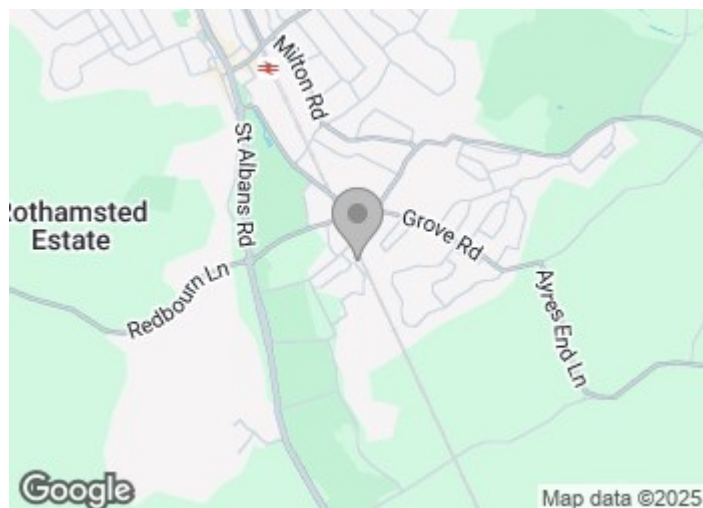
Bedroom One

13'10" x 9'10" (4.22m x 3.01m)

Bedroom Two

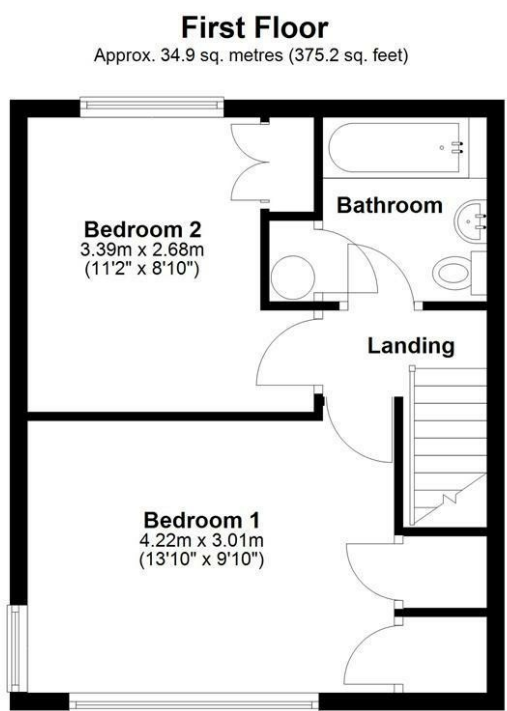
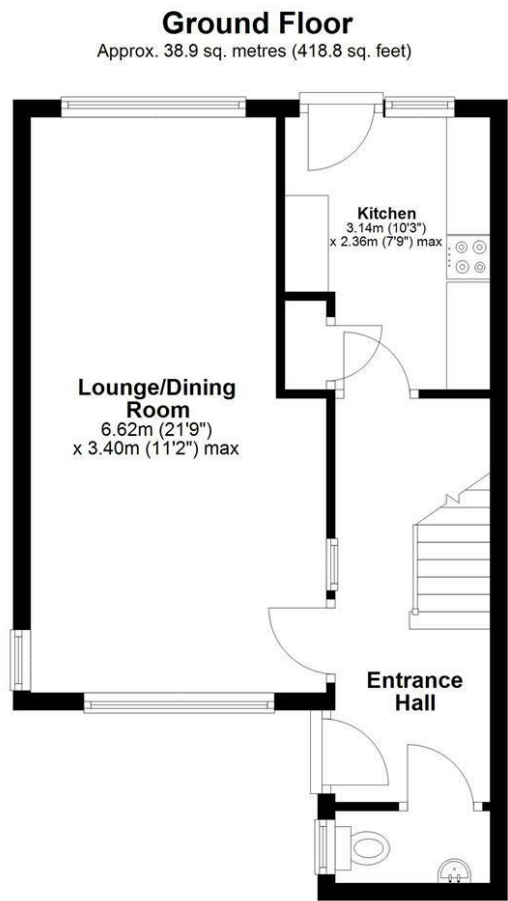
11'1" x 8'9" (3.39m x 2.68m)

Bathroom





Floor Plan



Total area: approx. 73.8 sq. metres (794.0 sq. feet)
Sketch layout only. Not to scale. Plan produced for Whittaker & Co.

Plan produced using PlanUp.

These particulars, whilst believed to be accurate are set out as a general outline only for guidance and do not constitute any part of an offer or contract. Intending purchasers should not rely on them as statements of representation of fact, but must satisfy themselves by inspection or otherwise as to their accuracy. No person in this firms employment has the authority to make or give any representation or warranty in respect of the property.

